

**1 GRUBB SHAFT**, now part of the Beaconsfield Mine and Heritage Centre. Built to secure the original Tasmania (Beaconsfield) gold mine's future in 1905, the Grubb Shaft was in ruins in 1919. A team of hard-working volunteers breathed new life into the shaft's engine house.

**2 CHIEF ENGINEERS RESIDENCE AND MINE OFFICE**  
 Today's rose garden was yesterday's failings dump. A century ago, the stately present-day Council Chambers was the mine office, and around it industry bustled and belched. From stop 2, walk down West Street to Weld Street (the main street) to continue the Walk of Gold.

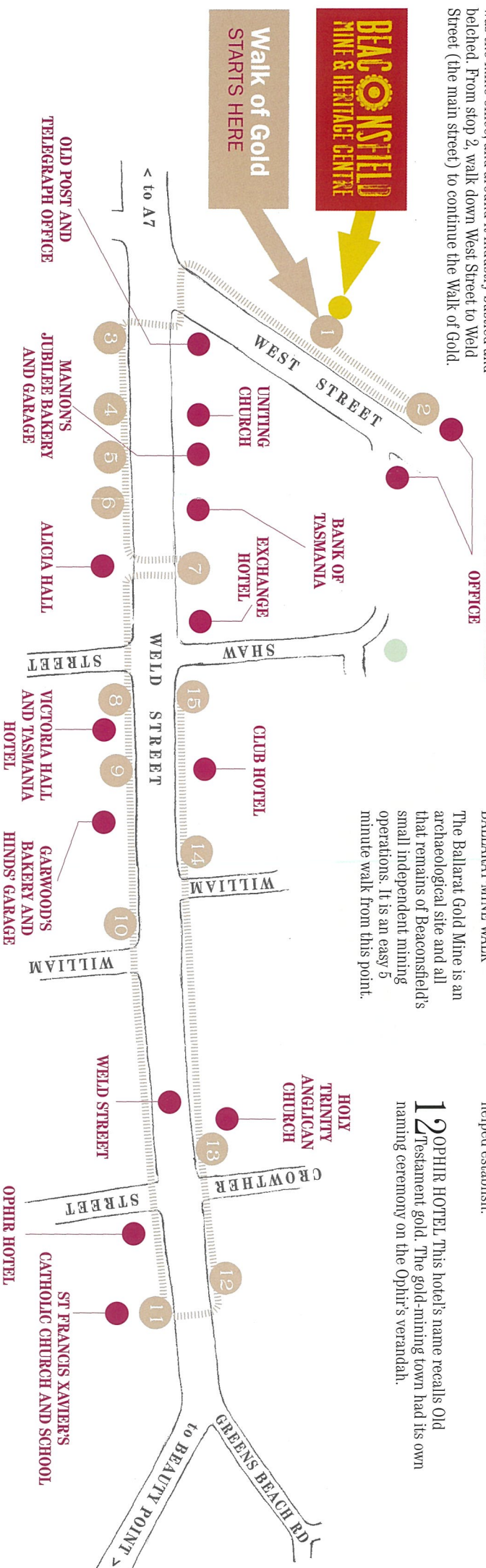
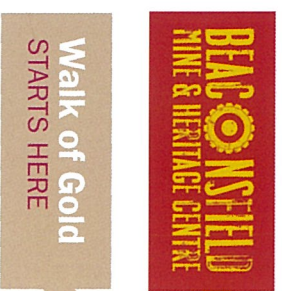
**BANK OF TASMANIA** A \$2,000,000 heist in a country town? That's what the 1884 robbery from the Bank of Tasmania is worth in today's currency. Read how outlaws ambushed a young bank manager and shoved his head in a pillow case.

**CHIEF ENGINEERS RESIDENCE AND MINE OFFICE**  
 BALLARAT MINE WALK  
 The Ballarat Gold Mine is an archaeological site and all that remains of Beaconsfield's small independent mining operations. It is an easy 5 minute walk from this point.

**10 WELD STREET** *Imagine three-quarters of a mile of porridge spread evenly from side to side... and having to wade through it. Learn more about a walk along Weld Street in earlier times and how the town celebrated the arrival of the King's agent.*

**11 ST FRANCIS XAVIER'S CATHOLIC CHURCH AND SCHOOL** Sister Gertrude Sullivan was once described as 'the most precious woman I have ever met'. Many present-day locals were educated in the school she helped establish.

**12 OPHIR HOTEL** This hotel's name recalls Old Testament gold. The gold-mining town had its own naming ceremony on the Ophir's verandah.



**3 GOLD POST AND TELEGRAPH OFFICE** This artistic building was once the hub of the town. Most communication with the 'outside world' was through it or the humble shack that preceded it.

**4 UNITING CHURCH** Wesleyan, Primitive Methodist, Methodist and now Uniting: the names of the denominations using this site have changed over time, but commitment to the welfare of others, and of standing strong in faith at times of crisis, have remained constant.

**5 MANION'S JUBILEE BAKERY AND GARAGE** You can't walk down Beaconsfield's main street without seeing the name Manion. Find out about this enterprising family who have served the community since their forebear Paddy Manion started a bakery commemorating Queen Victoria's long reign.

**7 ALICIA HALL** Renovated, beautiful, and femininely named. Yet a 1916 bomb blast features in its history.

**8 EXCHANGE HOTEL** The hotel's proprietor was held prisoner here as part of the fall-out of the 1884 bank robbery. Photos also illustrate the Exchange's colourful past.

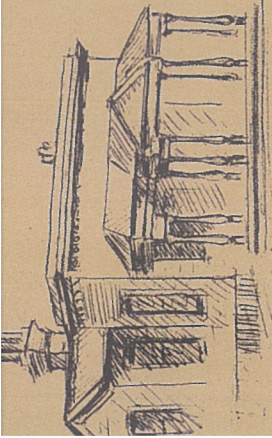
**9 CLUB HOTEL** This hotel was originally intended to provide accommodation but not alcohol. Guests enjoyed a luxury rare in mining towns: a bathroom.

As you wander along Weld Street, you will see variety of house styles. Some houses were previously small miners' cottages that have been extended and renovated. The colourful Art Deco period is also represented along Weld Street.

**13 HOLY TRINITY ANGLICAN CHURCH** From the photo, it seems that just about the whole town turned out to witness the laying of the foundation stone of this church. Early Beaconsfield churches burst at the seams as gold gripped the public imagination.

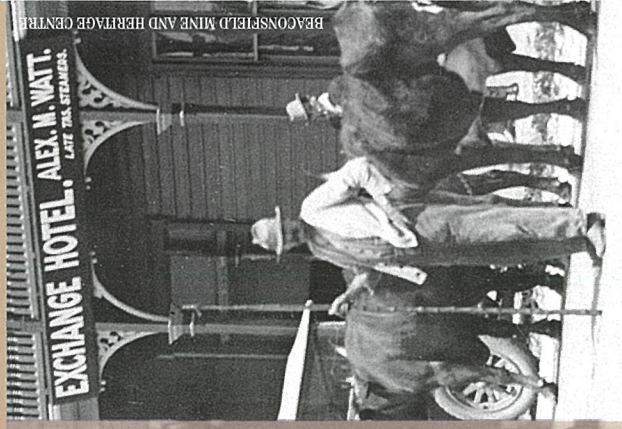
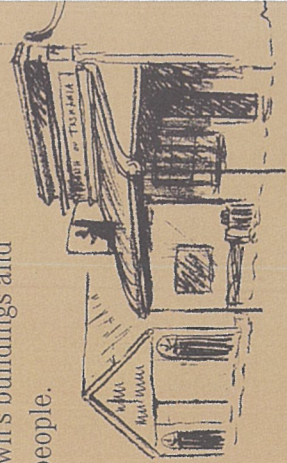
**14 GARWOODS BAKERY AND HINDS' GARAGE** Hooks, baking bread, pumping petrol and ambulance volunteers all feature in the history of these buildings.

**15 VICTORIA HALL AND TASMANIA HOTEL** Many of yesterday's buildings have disappeared, but the efforts of yesterday's people live on in the area today. This stop marks the end of Beaconsfield's Walk of Gold. We hope a little of your walk today will travel with you.

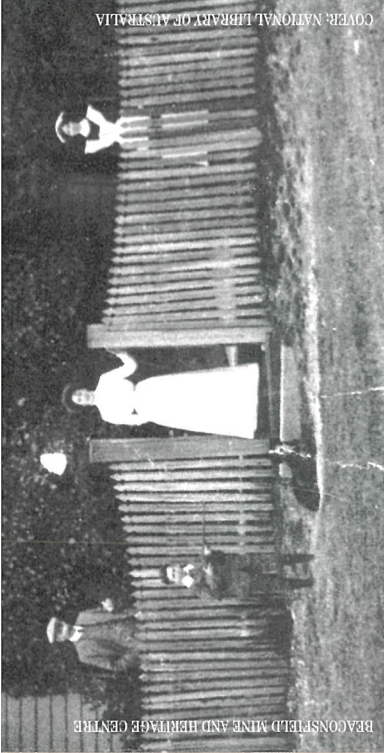


**B**EACONSFIELD is famous for the gold that lies below its surface, but the real riches of Beaconsfield are more valuable than gold. These riches are the people who build the community.

The Walk of Gold will introduce you to the history of Beaconsfield through stories about the town's buildings and some of its people.



BEACONSFIELD MINE AND HERITAGE CENTRE



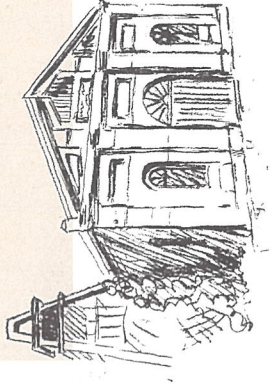
BEACONSFIELD MINE AND HERITAGE CENTRE

COVER, NATIONAL LIBRARY OF AUSTRALIA

# Beaconsfield's Walk of Gold

**WALK OF GOLD:** Starts from outside the Beaconsfield Mine and Heritage Centre.

**LENGTH:** 1.8 kilometre round trip, taking a leisurely 40–50 minutes. There are 15 signs along the way. The walk is on a paved surface and mostly on level ground.



JIM AND DORN FISCHNER



## BEACONSFIELD'S WALK OF GOLD

Project coordination Cathie Plowman; research and writing Cathie Plowman and Nic Haygarth; graphic design Julie Hawkins; sign design and construction Red Arrow; brochure illustrations Janet Fenton; editing Stephanie Pfennigwerth.

Many local people shared their stories, photos and hospitality for this project. Their kindness and generosity is much appreciated.

Thanks to the staff of the following organisations for their assistance.

- Community History Branch, Queen Victoria Museum and Art Gallery, Launceston
- State Library of Tasmania, Launceston
- Beaconsfield Mine and Heritage Centre
- West Tamar Council